



BENIF

2019
-
2020

LG Hausys HEADQUARTER One IFC 10 Gukjegeumyung-ro, Yeouido-Dong, Yeongdeungpo-Gu, Seoul, 150-876, Korea Tel +82-2-6930-0965 Fax +82-2-6930-0901

GLOBAL NETWORK

LG Hausys America, Inc. - ATLANTA
900 Circle 75 Pkwy Suite#1500, Atlanta, USA. GA 30339
TEL : 1-678-535-4117

LG Hausys Trading Co. Ltd. - SHANGHAI
19F Magnolia Plaza No.777 Hongqiao Road, Xuhui District, Shanghai,
China, 200030
TEL : 86-21-5241-6600

LG Hausys Europe GMBH - FRANKFURT
Lyoner str 15, Atricom C6, D/60528 Frankfurt am main, Germany
TEL : 49-69-5830-29420

LG Hausys Russia, LLC. - MOSCOW
Lesnaya Plaza, 8th Floor, 4, 4th Lesnoy Pereulok, Moscow, 125047, Russia
TEL : 7-495-663-3958

LG Hausys India Private Ltd. - GURGAON
Plot #11 Sector 44 Gurgaon Haryana - 122001, India
TEL : 91-124-421-2590

LG Hausys, Ltd. TAIPEI OFFICE - TAIPEI
2F, NO. 89, Sec. 2, Tiding Ave., Taipei 11493, Taiwan
TEL : 886-2-2658-6370

LG Hausys, Ltd. ISTANBULOFFICE - ISTANBUL
Büyükdere cad. Maslak Nuru Plaza No : 255A Blok 8.Kat 34398 Maslak,
Istanbul, Turkey
TEL : 90-212-285-1101

LG Hausys, Ltd. TOKYO OFFICE - TOKYO
Kyobashi Trust-Tower 14F, 2-1-3 Kyobashi, Chuo-ku, Tokyo, 104-0031, Japan
TEL : 81-3-5299-4537

LG Hausys, Ltd. JAKARTA OFFICE - JAKARTA
Tower One at The City Center (TCC) Batavia 18th Floor, Unit 2B
KH. Mas. Mansyur Kav. 126, Kel. Karet Tengsin, Kec. Tanah Abang,
Jakarta Pusat, 10220, Indonesia
TEL : 62-21-2967-5043

LG Hausys Middle East OFFICE - DUBAI
Dubai Internet City Building @3, Dubai, United Arab Emirates
TEL : 971-4-553-1452



Interior Film



LG Hausys



www.lghausys.com

BENIF




Interior Film

복인북 부착
210 x 297


CONTENTS


INDEX	04
SOLID	14
PEARLITE	24
METAL	28
CLASSIC WOOD	32
BIG WOOD	44
PREMIUM WOOD	48
DESIGN WOOD	60
WOOD	64
BIG MARBLE	76
MARBLE / STONE	78
LEATHER	83
WOVEN	86
FABRIC	88
FANCY	90
OUTDOOR	91

LG Hausys Interior Film BENIF sample book usage tips

 : These are new colors for 2019 & 2020. Non-flameproof products of the new colors will launch in 2021.

() : No. () refers to the non-flameproof color code.

 : Please check the pattern of the finished product of 1,220 x 2,000mm for the corresponding color from the pattern book.

 : Please make sure to observe the installation instructions at the back of the sample book for the relevant color

INDEX

* Color name change : HS001 → ES130, HS002 → ES158, NC014 → NS002, NC015 → NS003
 * All colors are applicable for vessels (Except GS/GM, LE, PL, WV)

N
 신패턴
 New

()
 비방염 권더번호
 Non-Flame retardant

SOLID

○ GM001	18
○ GS001	18
○ GS002	18
● RB08 (ESB08)	19
● RE03 (ESE03)	19
● RGM01 (EGM01)	22
● RGM02 (EGM02)	22
● RGM03 (EGM03)	21
● RGM04 (EGM04)	23
○ RGM05 (EGM05)	21
● RGM06 (EGM06)	22
○ RS13 (ES13)	20
● RS21 (ES21)	19
● RS22 (ES22)	19
● RS27 (ES27)	19
● RS31 (ES31)	19
● RS35 (ES35)	19
○ RS40 (ES40)	19
● RS45 (ES45)	19
● RS46 (ES46)	19
● RS47 (ES47)	19
● RS48 (ES48)	19
○ RS49 (ES49)	20
● RS51 (ES51)	19
● RS52 (ES52)	19
● RS55 (ES55)	20
● RS56 (ES56)	20
○ RS57 (ES57)	20
○ RS58 (ES58)	18
● RS61 (ES61)	19
● RS62 (ES62)	19
● RS68 (ES68)	20
○ RS69 (ES69)	20
○ RS70 (ES70)	20
○ RS71 (ES71)	20
● RS76 (ES76)	19
● RS80 (ES80)	18
○ RS81 (ES81)	18
○ RS82 (ES82)	19
● RS84 (ES84)	19
○ RS86 (ES86)	20
○ RS87 (ES87)	19
● RS88 (ES88)	19
● RS89 (ES89)	19
● RS90 (ES90)	18
○ RS91 (ES91)	20
○ RS92 (ES92)	20
● RS93 (ES93)	18
○ RS96 (ES96)	23
○ RS98 (ES98)	20
● RS100 (ES100)	19
○ RS101 (ES101)	20
● RS102 (ES102)	23
● RS103 (ES103)	22
○ RS104 (ES104)	21
○ RS105 (ES105)	21
○ RS106 (ES106)	20
○ RS107 (ES107)	21
● RS108 (ES108)	23
● RS109 (ES109)	22
○ RS110 (ES110)	20
● RS113 (ES113)	22
○ RS116 (ES116)	20
● RS117 (ES117)	23
○ RS118 (ES118)	19
○ RS119 (ES119)	19
● RS120 (ES120)	19
○ RS121 (ES121)	20
● RS122 (ES122)	19
● RS123 (ES123)	19
○ RS124 (ES124)	20
● RS125 (ES125)	19
● RS126 (ES126)	19
● RS127 (ES127)	19
● RS128 (ES128)	19
● RS129 (ES129)	22
○ RS130 (ES130) *	20
○ RS131 N	20
○ RS132 N	20
○ RS133 N	20
● RS134 N	20
● RS135 N	20
● RS136 N	19
● RS137 N	19
○ RS138 N	20
○ RS139 N	21
○ RS140 N	21

METAL

● RS141 N	21
● RS142 N	22
● RS143 N	22
○ RS144 N	20
○ RS145 N	21
● RS146 N	21
● RS147 N	22
● RS148 N	21
● RS149 N	22
○ RS150 N	21
● RS151 N	21
● RS152 N	22
● RS153 N	22
○ RS154 N	21
● RS155 N	21
● RS156 N	22
● RS157 N	23
● (ES158) *	19
● RSCJ1 (ESCJ1)	19
● RSCK1 (ESCK1)	18
○ RSH01 (ESH01)	18
● RSH05 (ESH05)	18
○ RSJD1 (HSJD1)	20
● RSJD2 (HSJD2)	23
○ RSP01 (ESP01)	21
● RSP02 (ESP02)	23
ME11	30
MP001	30
MP002	30
MP003	30
MP004	30
MP005	30
MP006	30
MS01	30
MS09	31
MS18	31
MS19	30
MS20	29
MS21	31
RP03	29
RP04	29

CLASSIC WOOD

RP06	31
RP08	29
RP42	29
RP45	31
RP46	29
RP47	31
RP48	31
RP49	29
RP50	30
RP51	30
RP52	31
RP53	30
PW101 N	43
PW102 N	43
PW103 N	43
PW104 N	43
PW105 N	39
PW106 N	39
PW107 N	39
PW108 N	39
PW109 N	41
PW110 N	41
PW111 N	41
PW112 N	41
PW113 N	37
PW114 N	37
PW115 N	37
PW116 N	33
PW117 N	33
PW118 N	33
PW119 N	34
PW120 N	34
PW121 N	34
PW122 N	34

BIG WOOD

BW001 N	46
BW002 N	46
BW003 N	46

PREMIUM WOOD

BW004 N	47
BW005 N	47
BW006 N	47
NW006 (NE006)	56
NW007 (NE007)	57
NW008 (NE008)	57
NW011 (NE011)	56
NW014 (NE014)	55
NW015 (NE015)	51
NW017 (NE017)	51
NW031 (NE031)	57
NW032 (NE032)	52
NW033 (NE033)	55
NW034 (NE034)	56
NW037 (NE037)	59
NW038 (NE038)	52
NW039 (NE039)	55
NW040 (NE040)	51
NW041 (NE041)	52
NW042 (NE042)	56
NW043 (NE043)	56
NW044 (NE044)	56
NW045 (NE045)	58
NW046 (NE046)	57
NW053 (NE053)	48
NW054 (NE054)	57
NW055 (NE055)	58
NW056 (NE056)	51
NW057 (NE057)	52
NW058 (NE058)	56
NW059 (NE059)	58
NW060 (NE060)	57
NW062 (NE062)	55
NW063 (NE063)	58
NW067 (NE067)	56
NW068 (NE068)	51
NW070 (NE070)	55
NW071 (NE071)	52
NW072 (NE072)	55
NW073 (NE073)	52
NW074 (NE074)	58

WOOD

NW078 (NE078)	55
NW079 (NE079)	57
NW080 (NE080)	49
NW081 (NE081)	58
NW082 (NE082)	49
NW083 (NE083)	55
NW084 (NE084)	51
NW085 (NE085)	55
NW086 (NE086)	50
NW087 (NE087)	57
NW088 (NE088)	56
NW089 (NE089)	51
NW090 (NE090)	58
NW092 (NE092)	50
NW095 (NE095)	51
NW096 (NE096)	57
NW097 (NE097)	49
NW098 (NE098)	51
NW099 (NE099)	49
NW100 (NE100)	49
NW101 (NE101)	50
NW102 N	52
NW103 N	58
NW104 N	59
NW105 N	54
NW106 N	49
NW107 N	48
NW108 N	52
NW109 N	50
NW110 N	49
NW111 N	48
NW112 N	52
NW113 N	49
NW114 N	49
NW115 N	58
CW01 (EW01)	65
CW44 (EW44)	72
CW57 (EW57)	69
CW69 (EW69)	71
CW79 (EW79)	69
CW87 (EW87)	73

WOOD

CW88 (EW88)	73
CW90 (EW90)	69
CW111 (EW111)	71
CW124 (EW124)	69
CW141 (EW141)	68
CW142 (EW142)	68
CW150 (EW150)	71
CW151 (EW151)	67
CW152 (EW152)	73
CW153 (EW153)	72
CW154 (EW154)	69
CW155 (EW155)	73
CW175 (EW175)	67
CW177 (EW177)	72
CW211 (EW211)	69
CW240 (EW240)	64
CW258 (EW258)	68
CW292 (EW292)	72
CW314 (EW314)	68
CW316 (EW316)	73
CW320 (EW320)	70
CW330 (EW330)	73
CW348 (EW348)	72
CW351 (EW351)	71
CW356 (EW356)	73
CW358 (EW358)	67
CW362 (EW362)	71
CW364 (EW364)	71
CW370 (EW370)	72
CW384 (EW384)	72
CW390 (EW390)	74
CW404 (EW404)	62
CW407 (EW407)	74
CW408 (EW408)	74
CW424 (EW424)	64
CW427 (EW427)	68
CW431 (EW431)	74
CW437 (EW437)	64
CW438 (EW438)	66
CW441 (EW441)	71
CW442 (EW442)	69
CW453 (EW453)	66
CW454 (EW454)	71
CW455 (EW455)	69
CW459 (EW459)	62

WOOD

CW466 (EW466)	72
CW469 (EW469)	72
CW506 (EW506)	65
CW509 (EW509)	66
CW510 (EW510)	74
CW511 (EW511)	64
CW512 (EW512)	71
CW513 (EW513)	71
CW518 (EW518)	67
CW519 (EW519)	70
CW521 (EW521)	64
CW523 (EW523)	65
CW527 (EW527)	66
CW529 (EW529)	69
CW530 (EW530)	64
CW531 (EW531)	66
CW533 (EW533)	67
CW534 (EW534)	68
CW535 (EW535)	70
CW537 (EW537)	68
CW544 (EW544)	64
CW552 (EW552)	64
CW553 (EW553)	65
CW554 (EW554)	70
CW555 (EW555)	74
CW556 (EW556)	74
CW557 (EW557)	66
CW575 (EW575)	65
CW579 (EW579)	71
CW582 (EW582)	70
CW588 (EW588)	69
CW590 (EW590)	68
CW597 (EW597)	65
CW598 (EW598)	68
CW599 (EW599)	70
CW600 (EW600)	65
CW601 (EW601)	67
CW602 (EW602)	70
CW603 (EW603)	65
CW604 (EW604)	65
CW605 (EW605)	68
CW606 (EW606)	65
CW609 (EW609)	71
CW611 (EW611)	74
CW612 (EW612)	62

WOOD

CW614 (EW614)	73
CW615 (EW615)	67
CW616 (EW616)	65
CW617 (EW617)	72
CW618 (EW618)	65
CW619 (EW619)	74
CW620 (EW620)	62
CW621 (EW621)	62
CW622 (EW622)	62
CW623 (EW623)	62
CW624 (EW624)	74
CW625 (EW625)	65
CW626 (EW626)	66
CW627 (EW627)	73
CW628 (EW628)	72
CWAC1 (EWAC1)	72
CWB1 (EWB1)	69
CWESA (EWESA)	74
CWPF3 (EWPF3)	74
CWSH2 (EWSH2)	70
DW156 (EW156)	68
DW157 (EW157)	69
DW159 (EW159)	68
DW161 (EW161)	64
DW179 (EW179)	68
DW180 (EW180)	69
DW182 (EW182)	65
DW190 (EW190)	72
DW195 (EW195)	69
DW207 (EW207)	66
DW307 (EW307)	70
DW308 (EW308)	68
DW350 (EW350)	69
DW371 (EW371)	72
DW388 (EW388)	74
DW398 (EW398)	68
DW400 (EW400)	62
DW406 (EW406)	65
DW456 (EW456)	74
DW467 (EW467)	74
DW548 (EW548)	66
DW549 (EW549)	67
DW550 (EW550)	71
DW576 (EW576)	67
DW629 N	60

WOOD

DW630 N	61
DW631 N	61
DW632 N	61
FWES3 (EWES3)	72
SW001	75
SW002	75
SW003	75
SW004	75
SW005	75
SW006	75
BM001 N	77
BM002 N	77
BM003 N	77
BM004 N	77
ML13	83
ML14	83
ML20	90
ML22	90
ML23	81
ML24	81
ML25	81
ML31	83
ML42	81
ML44	88
ML45	88
ML46	88
ML47	88
ML48	88
ML49	89
ML51	89
ML55	80
ML56	81
ML57	81
ML58	81
ML59	82
ML60	82
ML61	82

WOOD

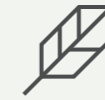
ML62	82
ML63	82
ML64	82
ML65	81
ML66	81
ML67	80
ML69	80
ML70 N	78
RM12	80
RM13	81
EL043	89
EL044	89
EL049	89
EL051	89
EL052	89
EL139	83
EL140	83
EL176	82
EL177	82
EL178	82
EL194	62
EL215	81
EL235	89
EL239 N	83
EV079	63
EV080	63
EV083	90
EV118	63
NS001 N	79
NS002 N *	80
NS003 N *	80

HEALTHIER, MORE PLEASANT, AND SAFER FROM FIRE



ECO-Friendly & Fire Safety

ECO-Friendly



LG Hausys Interior Film BENIF was developed with components satisfying the environment-friendly standards for various raw materials and adhesives, and transformed into a real eco-friendly product which meets the standards of public offices, schools, daycare centers as well as health-friendly homebuilding by achieving eco labels by types.



Eco Label



Indoor Air Quality

Eco Label

※ Some colors do not have an environment mark and environmental certificates are different for each product series, so please confirm the product name on the certificate and the environment mark on the packing box.

Volatile Organic Compounds	Commercial: Below 0.20 mg/m ³ .h Residential: Below 0.10 mg/m ³ .h
toluene	Below 0.080 mg/m ³ .h
formaldehyde	Below 0.015 mg/m ³ .h
lead, cadmium, mercury, hexavalent chrome	Below 1,000 mg/kg
lead	Below 600 mg/kg

Special Act on the Safety Management of Children's Product

Total phthalate plasticizer content
(FITI Testing & Research Institute)

Below 0.1%
(DEHP, DBP, BBP, DINP, DIDP, DNOP)

Antibacterial Performance (NW only)

Staphylococcus aureus and E.coli
exposure test result
(FITI Testing & Research Institute)

In case of bacterial count under 0.63 after 24
hours, antibacterial activity is 99.9%
(JIS Z 2801: 2010, film contact method)

Fire Safety



LG Hausys Interior Film BENIF is the product which was produced under the close quality control of LG Hausys and passed the strict flame proof testing of Korea Fire Institute. Also, the achievement of vessel material certification of Korean Register of Shipping by carrying out a performance test of vessel apparatus of KOMERI (Korea Marine Equipment Research Institute) proves its safety to be applicable for domestic and overseas vessels. (except GS, GM, LE, PL, and WV colors)



Korea Fire Institute



Korean Register of Shipping

Flame-resistant certification	carbonization area under 30cm ²	carbonization length under 20cm	remaining flame time under 3sec	Afterglow time under 5sec	Smoke Density under 200
-------------------------------	--	---------------------------------	---------------------------------	---------------------------	-------------------------

Classification standards

Item	partition wall, wall and ceiling materials	floor materials	deck materials	plastic pipe	smoke concentration	
					CO(mg/kg)	≤1,450
Dm	≤200	≤500	≤400	≤400	HBr(mg/kg)	≤600
CFE(kW/m ²)	≥20.0	≥7.0	≥7.0		HCL(mg/kg)	≤600
Qsb(MJ/m ²)	≥1.5	≥0.25	≥0.25		HCN(mg/kg)	≤140
Qt(MJ)	≤0.7	≤2.0	≤2.0		HF(mg/kg)	≤600
Qp(kW)	≤4.0	≤10.0	≤10.0		NO _x	NO(mg/kg) ≤350 NO ₂ (mg/kg) ≤350
flame drop	no occurrence	below 10	no occurrence		SO ₂ (mg/kg)	≤120
					SO ₂ (mg/kg) floor decoration	≤200

◆ Commercial Interior ◆

LG Hausys Interior Film BENIF creates trendy space for various commercial spaces.

INTERIOR PROPOSALS

COMMERCIAL

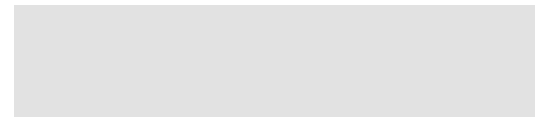


Showroom

LG Hausys Interior Film can be easily applied to stores in any shape. Create a space highlighting products with warm wood film which is completely attached to soft curved surface.



1. RS124



2. RS56



3. NW105



Cafe

Select unique patterns and colors for trendy and characterful space including a cafe. Combination of somber brown-toned metal of a bar table and rough texture of walls offers more modern and luxury ambience.



1. EL177



2. RS127



3. RP45



Hotel

Interior Film products with reliable flame proof function are essential particularly for accommodations including hotels. The balance of film which looks like coated in dark blue paint and metal texture creates fashionable lifestyle hotel space.



1. EL178



2. RP06



3. CW622



Lobby

Apply classy wood patterns and natural stone products to the large area. It presents the grandeur and naturalness to the space.



1. BM003



2. BM004



3. BW003

◆ Residential Interior ◆

Based on the customer big data analysis of interior design for residential space, four most preferred styles and matching products are suggested. Create stylish space with LG Hausys trendy Interior Films and various materials.



1 Interior Film / Premium Wood NW104 2 Interior Marble / Hi-Macs Granite Urban Concrete G554 3 Flooring / House Oceanus Cool Gray HTO0052-A3 4 Wallcovering / Bestie Modern Boutique/ Gray White 82461-1 5 Windows and doors / Super Save5 Pure White WAP97-G9

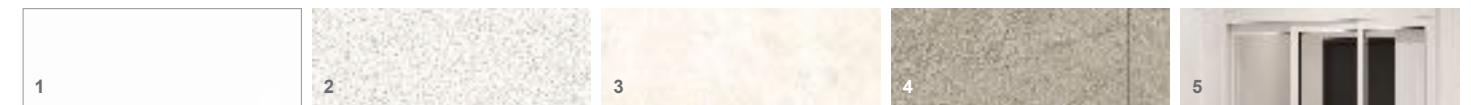
Vintage / Kitchen

Decorate like a cafe with vintage wood film.

According to the analysis of LG Hausys big data, the hottest trend recently is a vintage style like cafes. The vintage style has a wide range of variations, for example, sometimes to be modern or retro, so creates unique space. Along with the comeback of red and dark wood trend, decorate cafes and other spaces easily with newly designed vintage film.

INTERIOR PROPOSALS

RESIDENTIAL



1 Interior Film / Solid White RS130 2 Wallcovering / Bestie Real Painting / White 82458-1 3 Interior Marble / Hi-Macs Marmo Ispani M428 4 Flooring / House Oceanus Warm Gray HTO0053-A3 5 The Inner Gate / Classic tri-fold style Open-type white

Minimal / Living Room

Create minimalist space with solid film.

A storage space problem, the nuisance of small-and-medium sized apartment, can be solved by constructing a customized storage closet with various ideas. A simple storage closet, which even looks like a wall thanks to solid Interior Film finishing, is the best choice to express the minimalist lifestyle.



1 Interior Film / Solid Light Pink RS90
2 Flooring / Gangreen Super Antique White GAGRPAW-A2
3 Wallcovering / ZIA Fabric Clover / White T1052-1
4 Windows and doors / Super Save5 Pure White WAP97-G9
5 Wallcovering / ZIA Fabric Painting / Middle gray T1059-7

Soft Modern / Bedroom

Decorate your powder room with colors.

A healing space you want to have one at home. Create a hotel style powder room with LG Hausys Interior Film provided in a variety of colors as an interior color. The harmony of a room with bold colors and patterns inside a mono-toned chic space makes space in modern style with a softer touch.



1 Interior Film / Solid RS144
2 Wallcovering / Bestie Cross Cotton / Greige 82455-3
3 Flooring / ZIA Flooring Real Natural Oak PLAGRHNO-L2/R2
4 Flooring / House Oceanus Cool Gray HTO0025-A3
5 System Window / Folding Door A68P FD White

Planteria / Living Room

Coordinate nature-like films with plants.

For space to live with colorful pet plants, create minimalist space as if you are drawing freshness on the clean and blank canvas. A matte and neat concrete texture creates enough sense of space to embody nature. It can be applied to any space with high workability, so, the best choice for planterior.



RS142 **N**

※ 인쇄 색상은 실제 제품 색상과 차이가 있을 수 있습니다. / Print colors may differ from actual product colors.



RS145 **N**

SOLID
 HIGH GLOSS / SOLID EMBOSS / SOLID

풍성한 솔리드 컬러 구성이 트렌디하고 감각적인
 디자인과 세련된 공간 스타일은 연출합니다.
 Rich solid color schemes create trendy and
 sophisticated design as well as refined style of space.

More here
* 이 장을 펼쳐보세요.



RS128

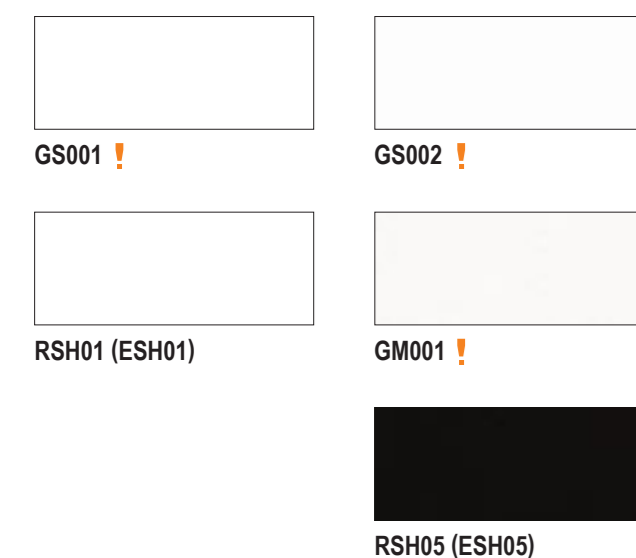
※ 인쇄 색상은 실제 제품 색상과 차이가 있을 수 있습니다. / Print colors may differ from actual product colors.

More here
* 이 장을 펼쳐보세요.

SOLID

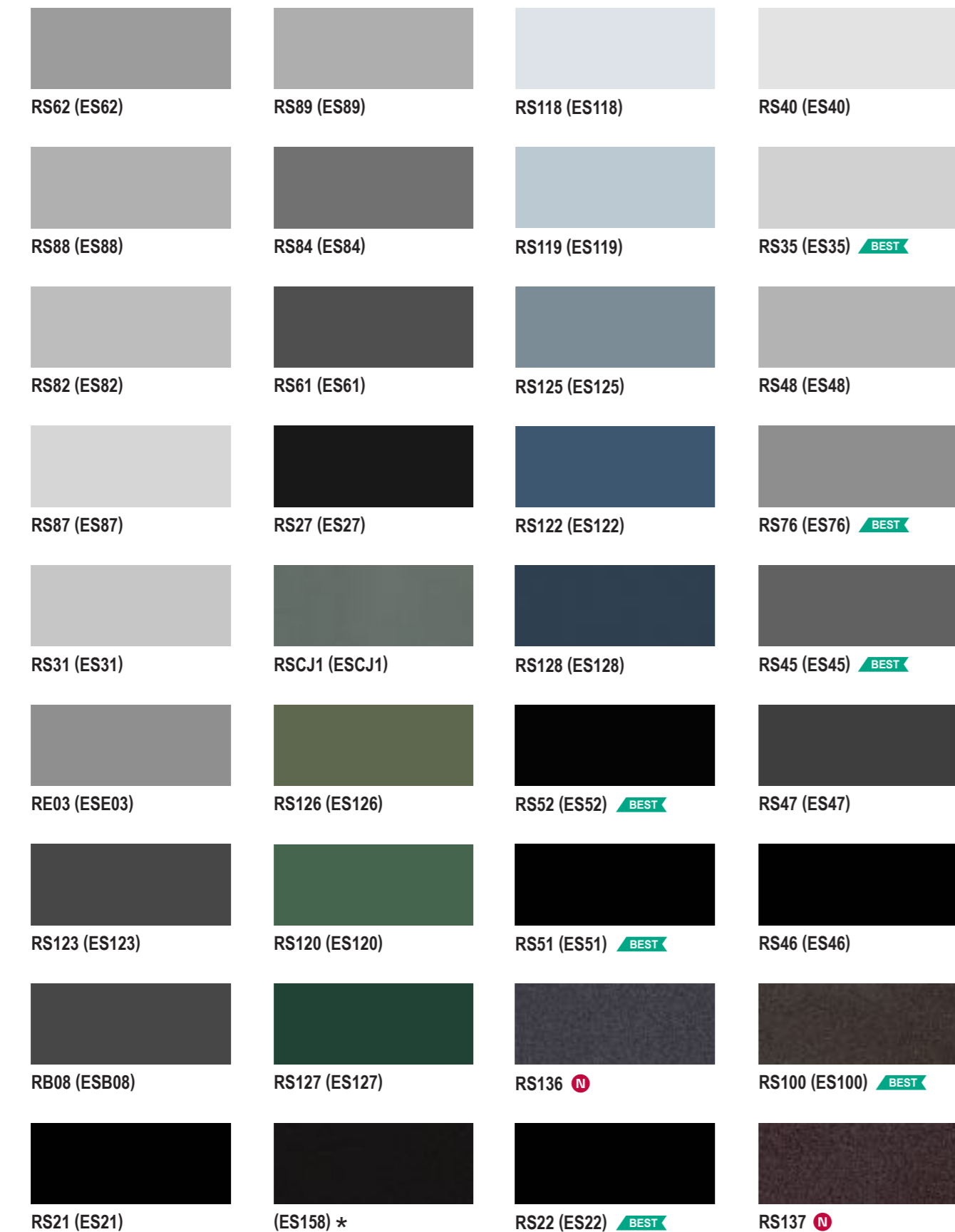


HIGH GLOSS

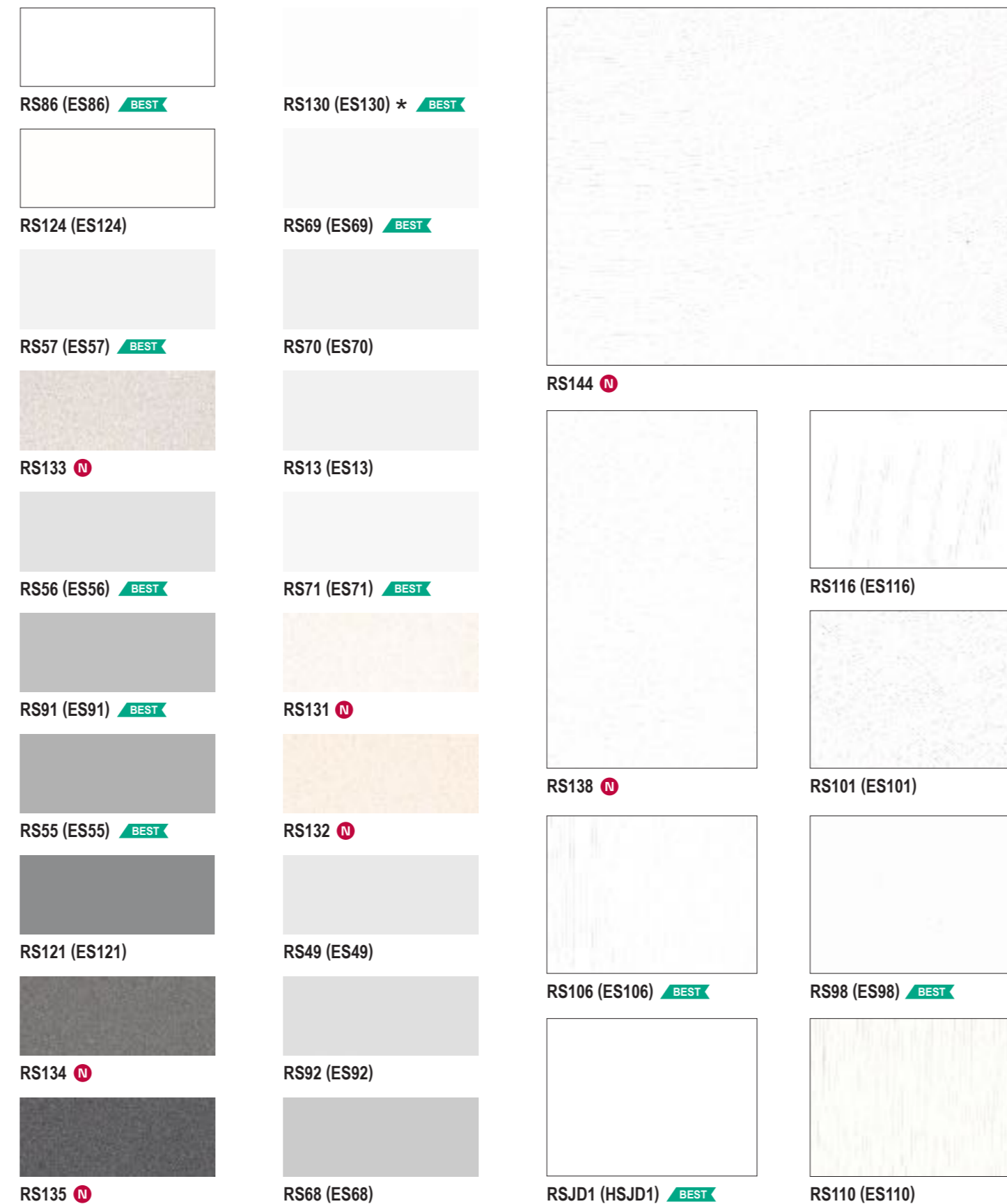


SOLID

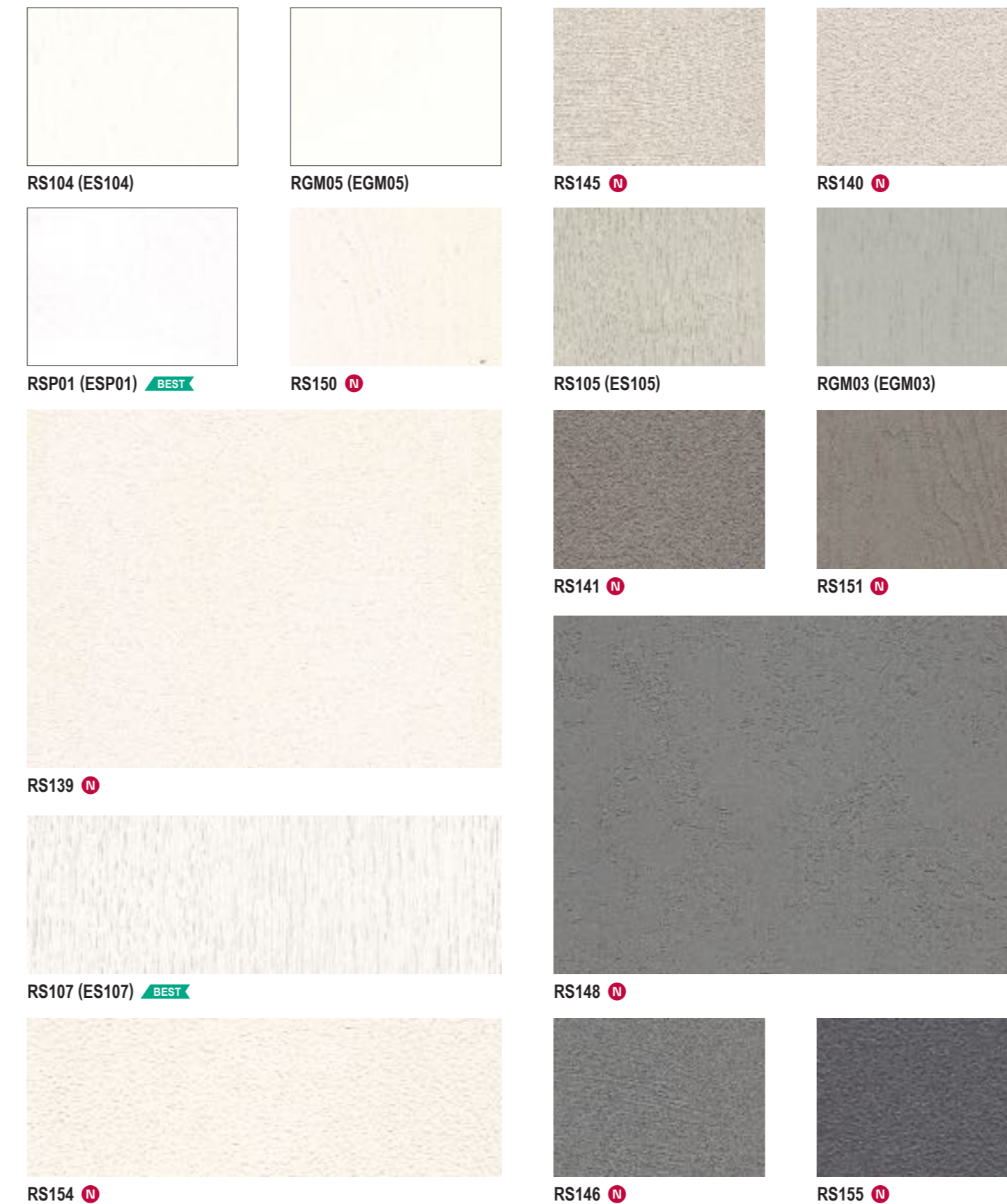
+ 컬러명 변경 (Color name change) : HS002→ES158, HS001→ES130



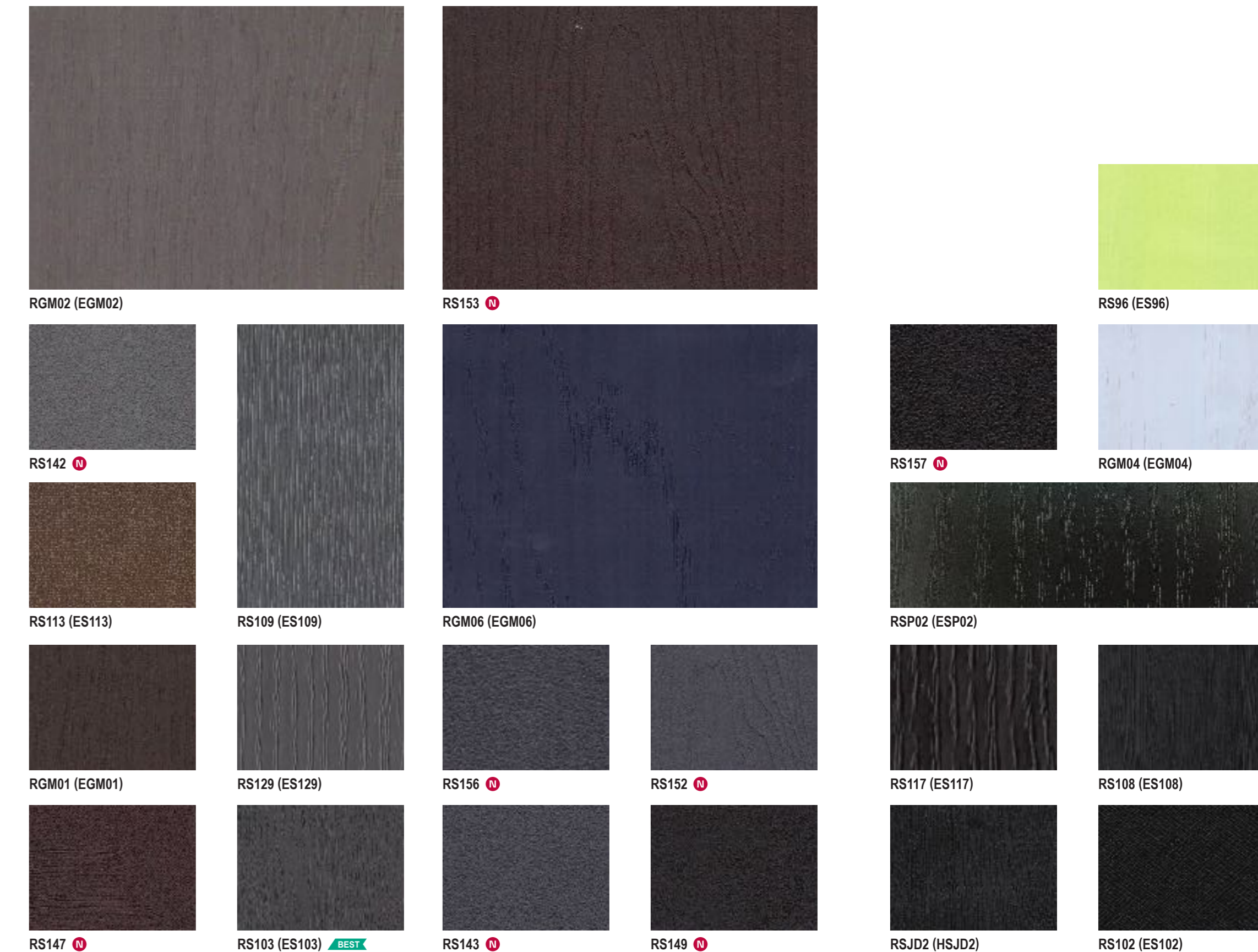
SOLID EMOSS



신제품 New
 비발연 필러번호 Non-Flame retardant
 패턴북 Pattern Book
 시공유의 Installation Instructions



SOLID EMOSS



PEARLITE

PL006



LOBBY / CONFERENCE ROOM

질석 Chip의 입체감과 펄의 고급감을 깊이 있게 연출하여 상업용 공간에 포인트로 어울리는 제품입니다.

Stereoscopic presentation of solid vermiculite chips and luxurious pearl is a good focal point for commercial space.

PEARLITE



PL001 **N** !

WARM WHITE



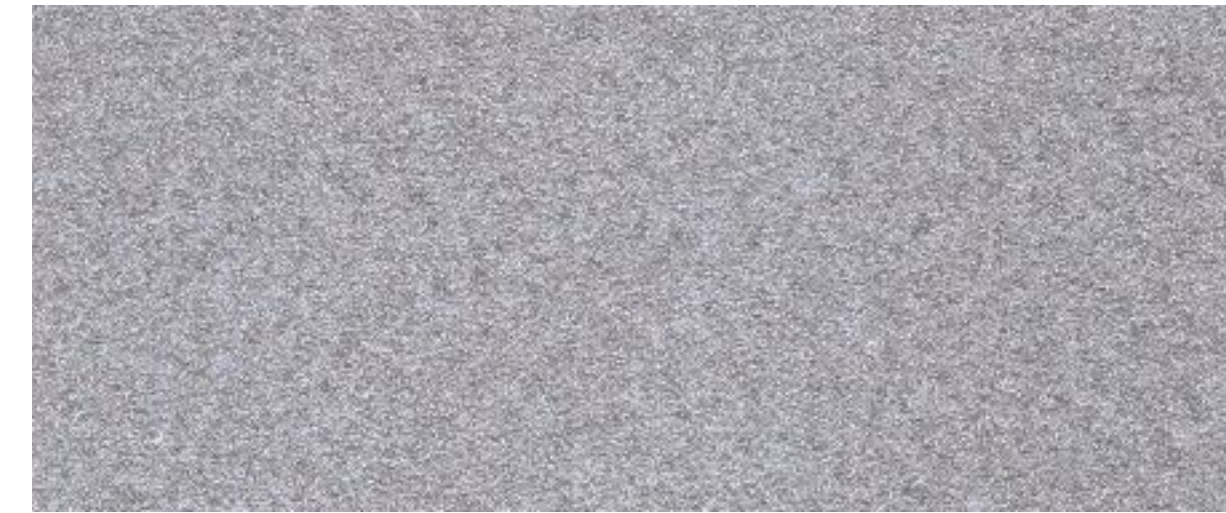
PL002 **N** !

WARM BROWN



PL003 **N** !

DARK BROWN



PL004 **N** !

GRAY



PL005 **N** !

COOL GRAY



PL006 **N** !

DARK GRAY

METAL

은은하게 비춰지는 럭셔리한 메탈은 마치
이국적이며 화려한 고급 호텔에 머무는 느낌을 줍니다.

Soft reflection of luxury metal provides
feelings as if you are staying in an exotic
and fancy first-class hotel.

MP004

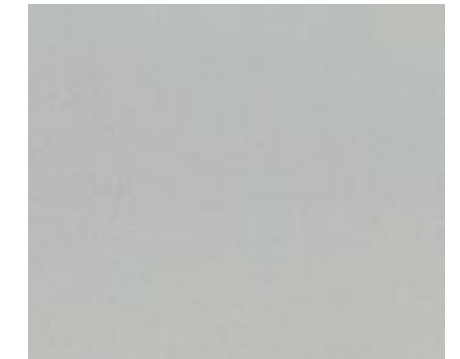
RP03

N
신패턴
New

()
비방염 권더번호
Non-Flame retardant

🔍
패턴북
Pattern Book

⚠️
시공유의
Installation Instructions



RP04



RP08



RP42



RP03



MS20

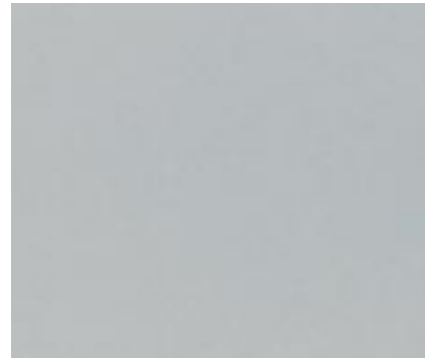


RP49



RP46

METAL



MS19



MS01



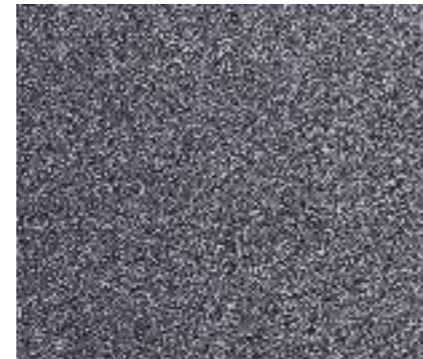
ME11



RP53



MP005



MP001



RP50



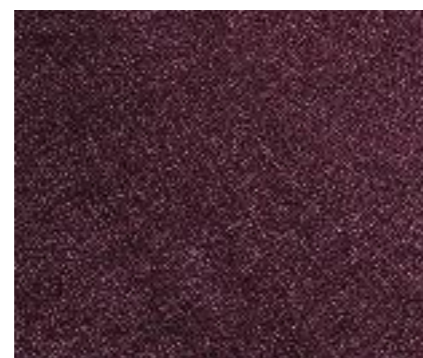
MP006



MP002



MP004



MP003



RP51



MS21



MS18



MS09



RP47



RP06



RP48



RP45



RP52

CLASSIC WOOD

클래식 우드는 나뭇결의 부드러운 숨결을
감성이 닿는 그대로 자연스럽게 표현하였습니다.

Classic wood embodies gentle breath of
wood grain naturally as it feels.

PW118

STANDARD OAK

N
신패턴
New

()
비방염 컬러변호
Non-Flame retardant

🔍
패턴북
Pattern Book

⚠️
시공유의
Installation Instructions



PW116 **N** 4P

STANDARD OAK



PW117 **N** 4P

STANDARD OAK



PW118 **N** 4P

STANDARD OAK

STANDARD OAK



PW119 **N** 4P

STANDARD OAK



PW120 **N** 4P

STANDARD OAK



PW121 **N** 4P

STANDARD OAK



PW122 **N** 4P

STANDARD OAK

N
신패턴
New

()
비방염 필러변호
Non-Flame retardant

패턴북
Pattern Book

!
시공유의
Installation Instructions



CLASSIC WOOD

PW113

SLAP OAK

N 신제품 New
() 비발염 킷더번호 Non-Flame retardant
패턴북 Pattern Book
! 시공유의 Installation Instructions



PW113 **N** Q,4P

SLAP OAK



PW114 **N** Q,4P

SLAP OAK



PW115 **N** Q,4P

SLAP OAK

CLASSIC WOOD

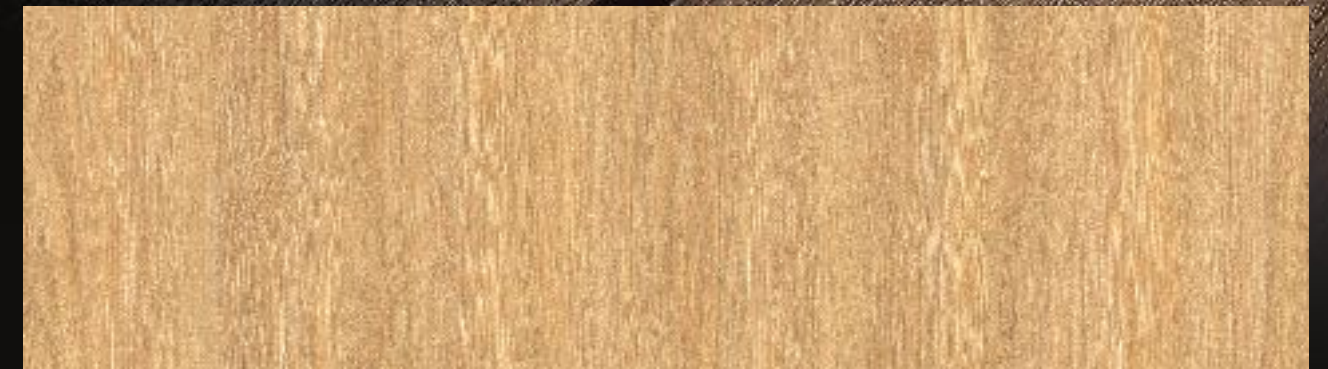


PW108

※ 인쇄 색상은 실제 제품 색상과 차이가 있을 수 있습니다. / Print colors may differ from actual product colors.

TEAK

- 신제품 New
- () 비발염 킷터변호 Non-Flame retardant
- 패턴북 Pattern Book
- ! 시공유의 Installation Instructions



PW105

TEAK



PW106

TEAK



PW107

TEAK



PW108

TEAK

CLASSIC WOOD



PW112

ASH

- 신제품
New
- 비발염 킷터번호
Non-Flame retardant
- 패턴북
Pattern Book
- 시공유의
Installation Instructions



PW109

ASH



PW110

ASH



PW111

ASH



PW112

ASH

CLASSIC WOOD



PW102

OAK

N 신패턴 New
() 비발염 킷터변호 Non-Flame retardant
패턴북 Pattern Book
! 시공유의 Installation Instructions



PW101 **N** Q,4P

OAK



PW102 **N** Q,4P

OAK



PW103 **N** Q,4P

OAK



PW104 **N** Q,4P

OAK

BIG WOOD

DESIGN CONCEPT

BIG DESIGN MORE NATURAL

기존 제품 대비 1.5배 커진 단위무늬도
패턴의 반복성은 줄여 내츨럴한 느낌은 극대화 하였습니다.

Reduced repetition of patterns with 1.5 times
bigger unit pattern compared to existing products
maximizes the feeling of naturalness.

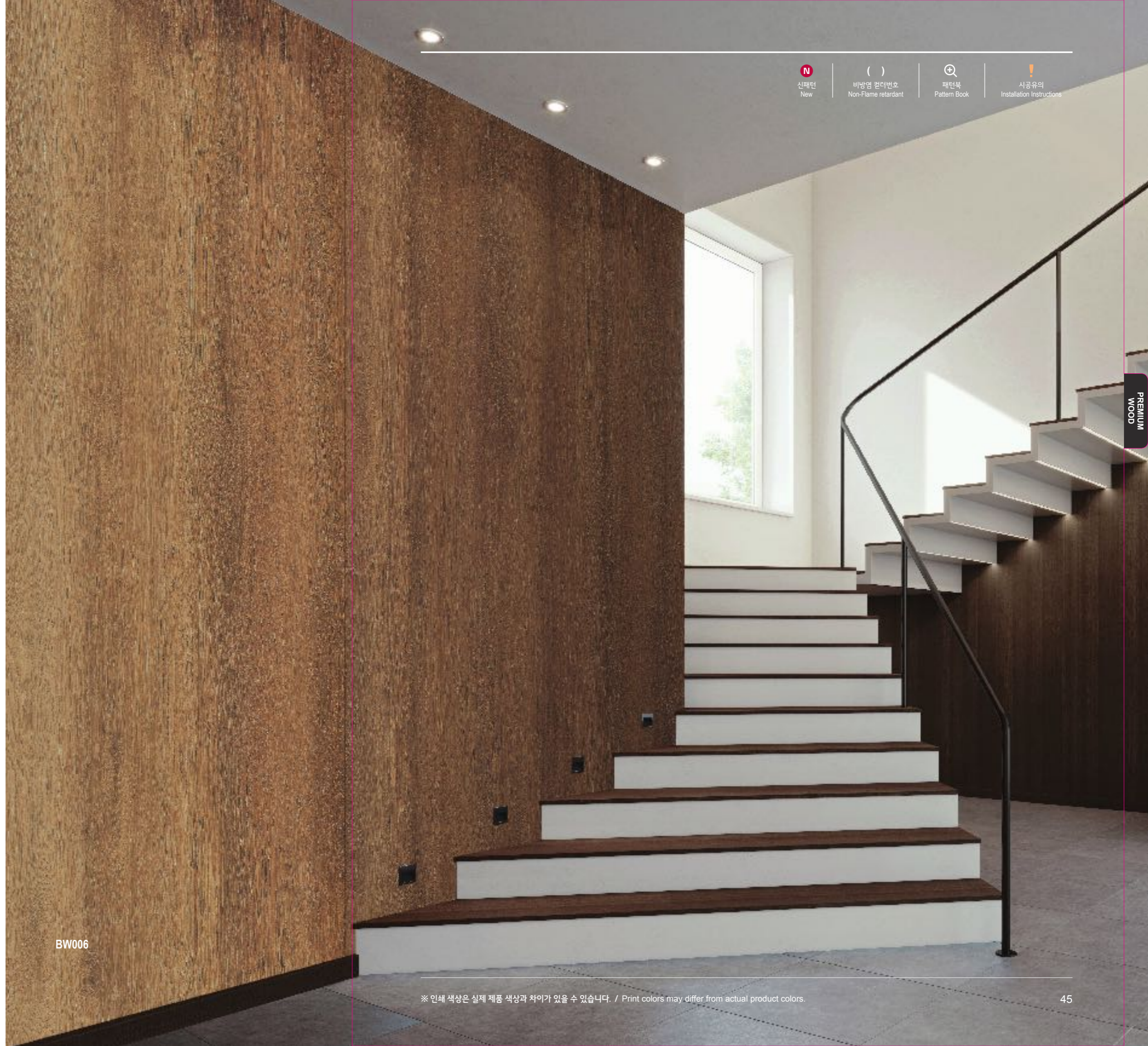


기존 CW602 (Current CW602) 신규 BW006 (New BW006)



BW006 N Q4P

OAK



N
신패턴
New

()
비방염 필더번호
Non-Flame retardant

패턴북
Pattern Book

!
시공유의
Installation Instructions

PREMIUM
WOOD

BW006

BIG WOOD



BW001 **N** 4P

ASH



BW002 **N** 4P

WALNUT



BW003 **N** 4P

WALNUT

N
신패턴
New

()
비방염 원더번호
Non-Flame retardant

패턴북
Pattern Book

!
시공유의
Installation Instructions



BW005 **N** 4P

OAK



BW006 **N** 4P

OAK



BW004 **N** 4P

OAK

PREMIUM WOOD



NW107



NW111 N Q.9P

ASH



NW107 N Q.9P

TEAK



NW053 (NE053) Q.6P

TEAK



NW110 N Q.9P

TEAK



NW106 N Q.9P

OAK



NW114 N Q.9P

ASH



NW080 (NE080) Q.8P

CASTAGNO CARDDUCI



NW099 (NE099) Q.9P

WALNUT



NW113 N Q.9P

ASH



NW097 (NE097) Q.8P

TEAK



NW082 (NE082) Q.8P

OAK



NW100 (NE100) Q.9P

WALNUT

PREMIUM WOOD



NW086 (NE086) 8P OAK



NW101 (NE101) 9P WALNUT



NW092 (NE092) 8P LINE TEAK



NW040 (NE040) 5P ASH



NW089 (NE089) 8P TEAK



NW084 (NE084) 8P OAK



NW109 9P TEAK



NW095 (NE095) 8P VINTAGE OAK



NW015 (NE015) 5P OAK



NW068 (NE068) 7P PADOUK



NW098 (NE098) 8P TEAK



NW017 (NE017) 5P OAK



NW056 (NE056) 6P TEAK

PREMIUM WOOD



NW102 **N** 9P OAK



NW112 **N** 9P ASH



NW073 (NE073) 7P BIRCH



NW108 **N** 9P TEAK



NW032 (NE032) 5P OAK



NW057 (NE057) 6P OAK



NW041 (NE041) 5P WHITE OAK



NW071 (NE071) **BEST** 7P MAPLE



NW038 (NE038) 5P ASH



RS124

NW102

RS56

PREMIUM WOOD



NW105 N Q,9P OAK



NW085 (NE085) Q,8P OAK



NW033 (NE033) BEST Q,5P OAK



NW083 (NE083) Q,8P OAK



NW014 (NE014) Q,5P OAK



NW062 (NE062) BEST Q,6P WIZARD GRAIN



NW039 (NE039) Q,5P ASH



NW078 (NE078) Q,7P TEAK



NW072 (NE072) Q,7P TEAK



NW070 (NE070) Q,7P ASH

PREMIUM WOOD

N
신패턴
New

()
비방염 권터번호
Non-Flame retardant

패턴북
Pattern Book

!
시공유의
Installation Instructions



NW006 (NE006) ④ 5P AMAZAHOUÉ



NW011 (NE011) ④ 5P ASH



NW043 (NE043) ④ 5P WHITE OAK



NW087 (NE087) ④ 8P OAK



NW054 (NE054) ④ 6P TEAK



NW031 (NE031) ④ 5P ANTIQUE TEAK



NW042 (NE042) ④ 5P WHITE OAK



NW034 (NE034) **BEST** ④ 5P OAK



NW067 (NE067) ④ 6P TEAK



NW007 (NE007) ④ 5P AMAZAHOUÉ



NW060 (NE060) ④ 6P WALNUT



NW046 (NE046) ④ 6P WALNUT



NW088 (NE088) ④ 8P TEAK



NW044 (NE044) ④ 6P WALNUT



NW058 (NE058) ④ 6P OAK



NW008 (NE008) ④ 5P AMAZAHOUÉ



NW096 (NE096) ④ 8P VINTAGE OAK



NW079 (NE079) ④ 7P CHERRY

PREMIUM WOOD



NW103 **N** Q.9P OAK



NW059 (NE059) Q.6P OAK



NW074 (NE074) Q.7P ASH



NW045 (NE045) Q.6P WALNUT



NW063 (NE063) Q.6P TEAK



NW081 (NE081) Q.8P WALNUT CUBIC



NW115 **N** Q.9P MAHOGANY



NW090 (NE090) Q.8P TEAK



NW055 (NE055) Q.6P TEAK



NW104 **N** Q.9P OAK

[CODY 제안]
Suggestions for interior coordination

NW037 (NE037) Q.5P MERBAU

NW104

DESIGN WOOD

다양한 트렌드 변화 속에서
 쉐브런 스타일의 우드 패턴을 적용함으로써
 빈티지한 감성을 표현할 수 있습니다.

Application of a chevron wood pattern in various
 changes in trend expresses vintage feeling.



DW629

DW629 **N** Q,21P

CHEVRON PAINTED



N
 신패턴
 New

()
 비발염 원디번호
 Non-Flame retardant

🔍
 패턴북
 Pattern Book

⚠️
 시공주의
 Installation Instructions

DW631

DW632 **N** Q,21P

STRIPE WHITE

DW630 **N** Q,21P

CHEVRON WHITE

DW631 **N** Q,21P

CHEVRON GRAY

DESIGN WOOD



CW621 (EW621) ④ 18P ANTIQUE PAINTED WOOD



CW459 (EW459) ④ 14P THINWIN



CW620 (EW620) ④ 18P PAINTED WOOD



EL194 ④ 23P ! STYLE BAMBOO (IVORY)



CW622 (EW622) ④ 18P ANTIQUE PAINTED WOOD



CW623 (EW623) ④ 18P ANTIQUE PAINTED WOOD



CW612 (EW612) ④ 17P SCRAP WOOD



DW400 (EW400) ④ 20P ANTIQUE PINE



CW404 (EW404) ④ 13P SLICE WOOD



EV079 ④ 23P ! LUXURY WOOD



EV080 ④ 23P ! LUXURY WOOD



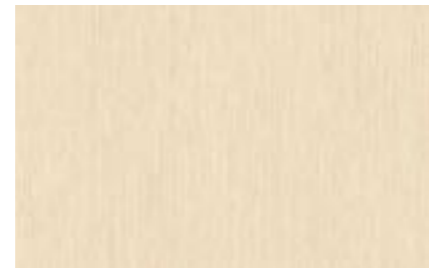
EV118 ④ 23P ! SMOKY WOOD



WOOD



CW511 (EW511) BEST 14P ELM



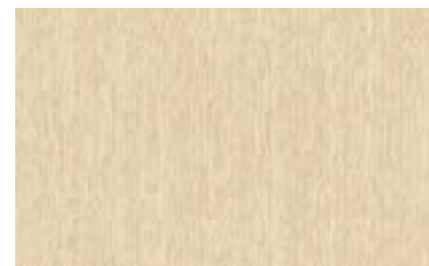
CW437 (EW437) 14P CHERRY



CW521 (EW521) 15P PINE



CW552 (EW552) 15P BIRCH



CW424 (EW424) 13P OLIVE LINE



CW530 (EW530) 15P ASH



CW544 (EW544) 15P ROSE WOOD



CW240 (EW240) 11P ELM



DW161 (EW161) 19P OAK



CW600



DW406 (EW406) 13P WIZARD GRAIN



CW606 (EW606) 17P ELM



CW575 (EW575) 16P ASH



CW616 (EW616) 17P ELM



CW597 (EW597) 16P OAK



CW553 (EW553) 15P BIRCH



CW600 (EW600) 16P ASH



CW618 (EW618) 17P WASHED OAK



CW625 (EW625) 18P ASH



CW523 (EW523) 15P PINE



DW182 (EW182) 19P TEAK



CW603 (EW603) 16P OAK



CW01 (EW01) 9P ELM



CW604 (EW604) 16P WASHED OAK



CW506 (EW506) 14P TEAK

WOOD



CW438 (EW438) ④ 14P CHERRY



CW453 (EW453) ④ 14P NOCE



CW531 (EW531) ④ 15P ASH



CW527 (EW527) ④ 15P MAPLE



DW548 (EW548) **BEST** ④ 20P OAK



DW207 (EW207) ④ 20P TEAK



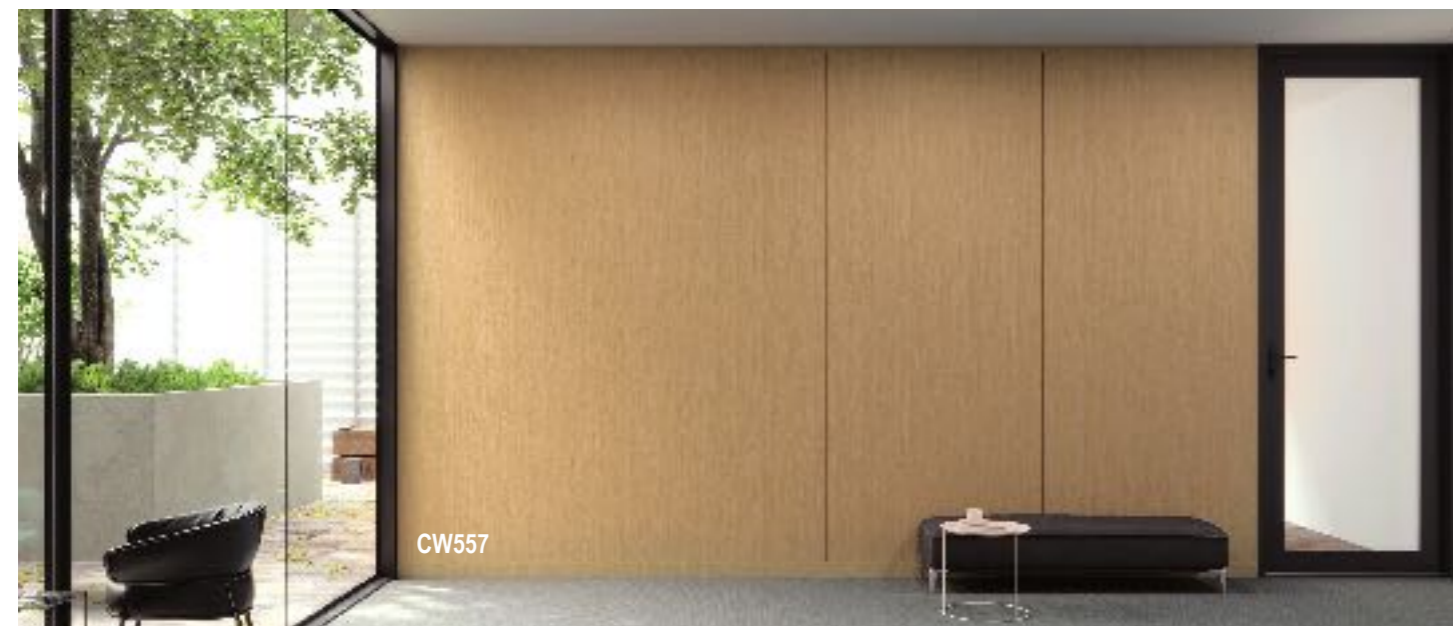
CW626 (EW626) ④ 18P OAK



CW509 (EW509) ④ 14P ELM



CW557 (EW557) **BEST** ④ 16P OAK



CW557

N
신패턴
New

()
비방염 권터번호
Non-Flame retardant

④
패턴북
Pattern Book

!
시공유의
Installation Instructions



CW615



CW533 (EW533) ④ 12P OAK



DW549 (EW549) ④ 20P OAK



CW518 (EW518) ④ 15P ASH



CW615 (EW615) **BEST** ④ 17P OAK



CW358 (EW358) ④ 12P CASTAGNO CARDDUCI



CW151 (EW151) ④ 11P OAK



CW175 (EW175) ④ 11P OAK



DW576 (EW576) ④ 16P ASH



CW601 (EW601) ④ 16P ASH

WOOD



CW537 (EW537) **BEST** 15P BIRCH



CW590 (EW590) 15P BIRCH



CW141 (EW141) **BEST** 10P MAPLE



CW598 (EW598) **BEST** 16P OAK



CW142 (EW142) 10P MAPLE



DW398 (EW398) 20P GREEN PINE



CW605 (EW605) 17P WASHED OAK



DW156 (EW156) 19P MAPLE



CW427 (EW427) 13P NOCE



CW258 (EW258) **BEST** 11P OAK



DW159 (EW159) 19P OAK



CW534 (EW534) 12P OAK



DW308 (EW308) **BEST** 20P OAK



DW179 (EW179) **BEST** 19P TEAK



CW314 (EW314) 11P ASH



CW79 (EW79) 10P MAPLE



CW455 (EW455) 14P NOCE



DW350 (EW350) 12P ANEGRE



DW157 (EW157) 19P MAPLE



CW588 (EW588) 12P WALNUT



CW529 (EW529) 15P MAPLE



CW90 (EW90) 10P SYCAMORE



CW154 (EW154) 11P TEAK



CW211 (EW211) 11P ASH



DW195 (EW195) 20P TEAK



DW180 (EW180) 19P TEAK



CW442 (EW442) 14P BAMBOO



CW57 (EW57) 10P OAK



CW124 (EW124) 10P CHERRY



CWB1 (EWB1) 19P CHERRY

WOOD



CW599 (EW599) ④ 16P OAK



CW602 (EW602) ④ 16P ASH



DW307 (EW307) ④ 20P OAK



CW609 (EW609) ④ 13P WALNUT



CW512 (EW512) ④ 15P TEAK



CW441 (EW441) ④ 14P BAMBOO



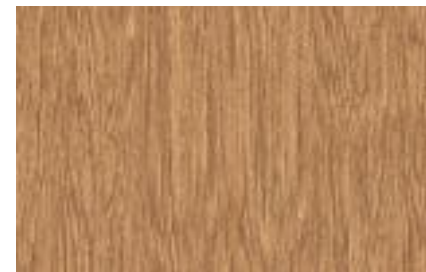
CW519 (EW519) **BEST** ④ 15P ASH



CWSH2 (EWSH2) ④ 19P OAK



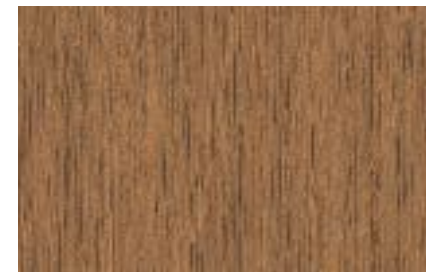
CW535 (EW535) ④ 12P OAK



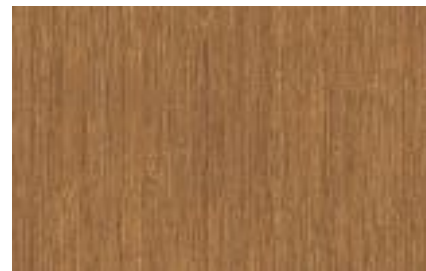
DW550 (EW550) **BEST** ④ 20P OAK



CW454 (EW454) ④ 14P NOCE



CW579 (EW579) ④ 16P BAO



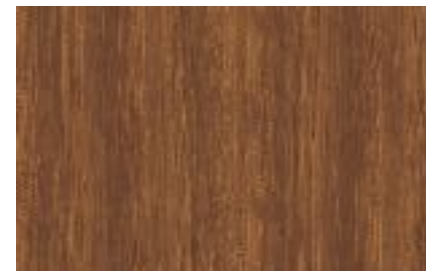
CW554 (EW554) ④ 15P BIRCH



CW582 (EW582) ④ 16P TEAK



CW320 (EW320) ④ 12P ZEBRANO



CW513 (EW513) ④ 15P TEAK



CW150 (EW150) ④ 11P TEAK



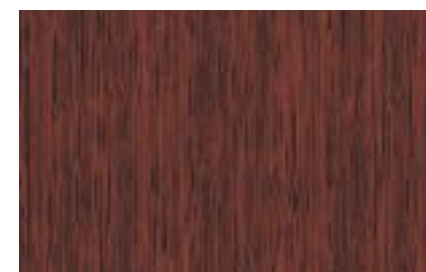
CW111 (EW111) ④ 10P CHERRY



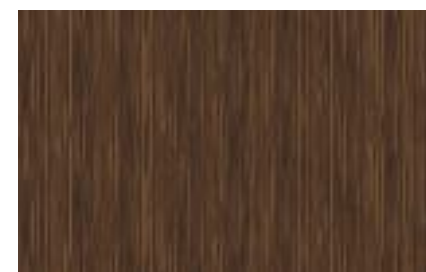
CW69 (EW69) ④ 10P CHERRY



CW351 (EW351) ④ 12P ANEGRE



CW362 (EW362) ④ 12P ROSE WOOD



CW364 (EW364) ④ 12P ROSE WOOD

WOOD



CW292 (EW292) ④ 11P OAK



CW370 (EW370) ④ 13P TEAK



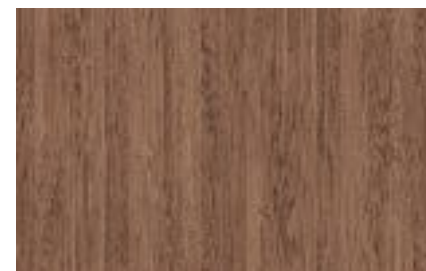
CW384 (EW384) ④ 13P TEAK



CWAC1 (EWAC1) ④ 12P OAK



CW617 (EW617) ④ 17P TEAK



FWES3 (EWES3) ④ 13P WALNUT



CW469 (EW469) ④ 14P PADOUK



CW177 (EW177) ④ 11P TEAK



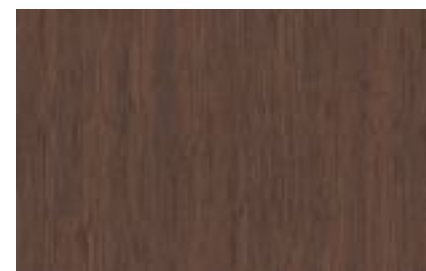
CW44 (EW44) ④ 9P ANEGRE



DW190 (EW190) **BEST** ④ 19P TEAK



CW153 (EW153) ④ 11P TEAK



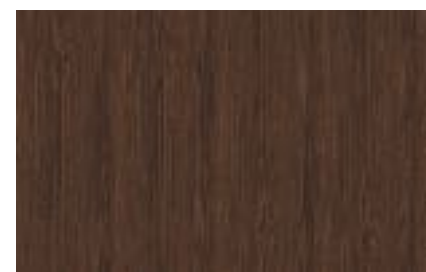
CW628 (EW628) ④ 18P CHERRY



CW466 (EW466) ④ 14P WALNUT



DW371 (EW371) ④ 13P TEAK



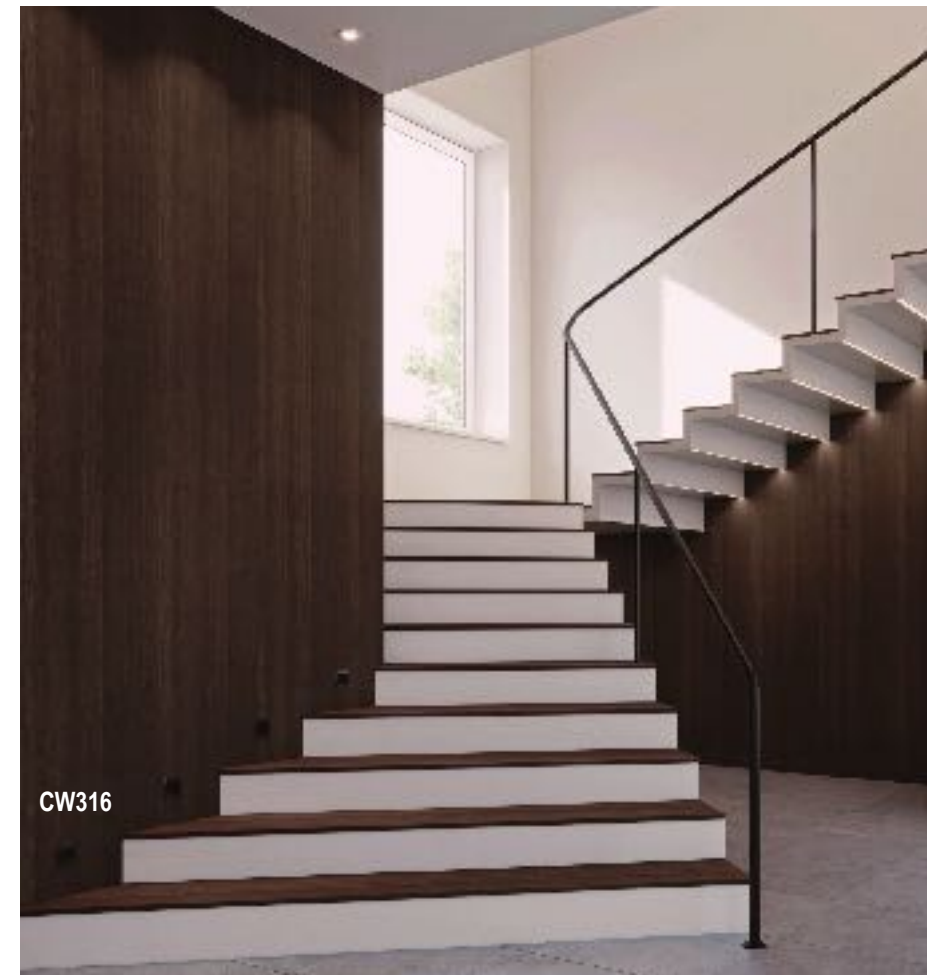
CW348 (EW348) ④ 12P ROSE WOOD

N
신패턴
New

()
비방염 권터번호
Non-Flame retardant

④
패턴북
Pattern Book

!
시공유의
Installation Instructions



CW316



CW316 (EW316) ④ 11P ASH



CW152 (EW152) ④ 11P WALNUT



CW88 (EW88) ④ 10P CHERRY



CW87 (EW87) ④ 10P WALNUT



CW356 (EW356) ④ 12P COCONUT



CW330 (EW330) ④ 12P OAK



CW155 (EW155) ④ 11P TEAK



CW614 (EW614) ④ 17P EBONY



CW627 (EW627) ④ 18P TEAK

WOOD



CW611 (EW611) **BEST** 15P ASH



CW390 (EW390) 13P WALNUT



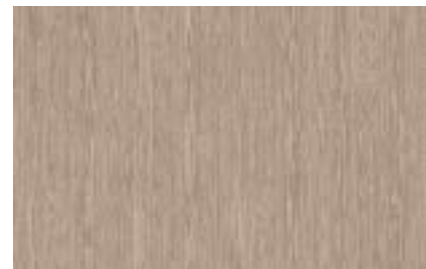
CW556 (EW556) 16P OAK



CW619 (EW619) 18P OAK



DW388 (EW388) 20P TEAK



CW510 (EW510) 14P ELM



CWPF3 (EWPF3) 11P OAK



CW555 (EW555) 15P BIRCH



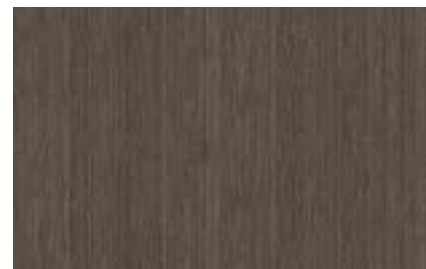
CW407 (EW407) 13P WIZARD GRAIN



CW431 (EW431) 13P WALNUT



DW456 (EW456) 20P TEAK



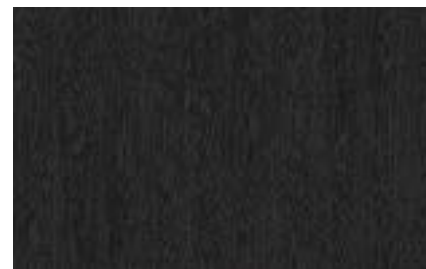
CW408 (EW408) 13P WIZARD GRAIN



DW467 (EW467) 14P WALNUT



CWESA (EWESA) 19P DARK ASH



CW624 (EW624) 18P OAK



SW001 21P ! ASH



SW002 21P ! ASH



SW003 21P ! ASH



SW004 21P ! OAK



SW005 21P ! OAK



SW006 21P ! OAK

BIG MARBLE

마블을 빅사이즈로 구현한 제품으로,
웅장함과 감각적인 공간을 연출해 보세요.

Create magnificent and stylish space
with big size marble products.

BM003



N
신패턴
New

()
비방염 원터번호
Non-Flame retardant

⊕
패턴북
Pattern Book

!
시공유의
Installation Instructions



BM001 **N** Q21P

LIGHT MARBLING



BM002 **N** Q21P

MARBLING



BM003 **N** Q21P

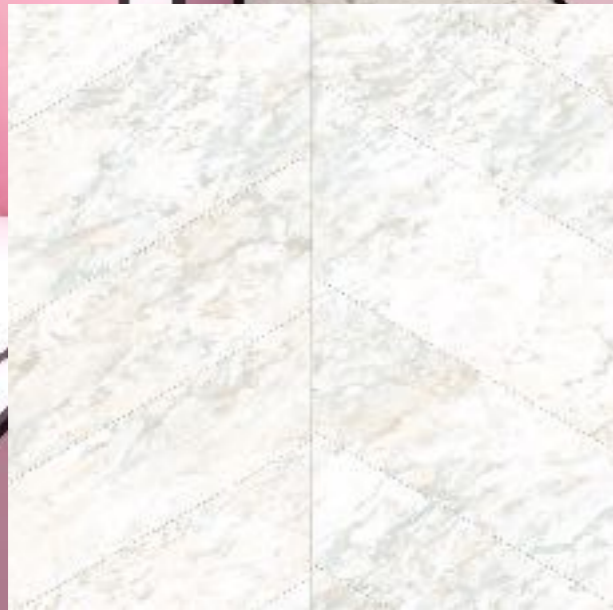
GRAY MARBLE



BM004 **N** Q21P

DARK GRAY MARBLE

MARBLE / STONE



ML70 **N** 23P

CHEVRON MARBLE

- N** 신패턴 New
- () 비방염 필드번호 Non-Flame retardant
- 패턴북 Pattern Book
- 시공문의 Installation Instructions



NW104, NS001



NS001 **N** 23P

CHEVRON BRICK

MARBLE / STONE

* 컬러명 변경 (Color name change) : NC014 → NS002, NC015 → NS003



ML55 22P ANTIQUE BRICKS (WHITE)



RM12 22P MARBLE



ML67 22P BIANCO CARRARA (WHITE)



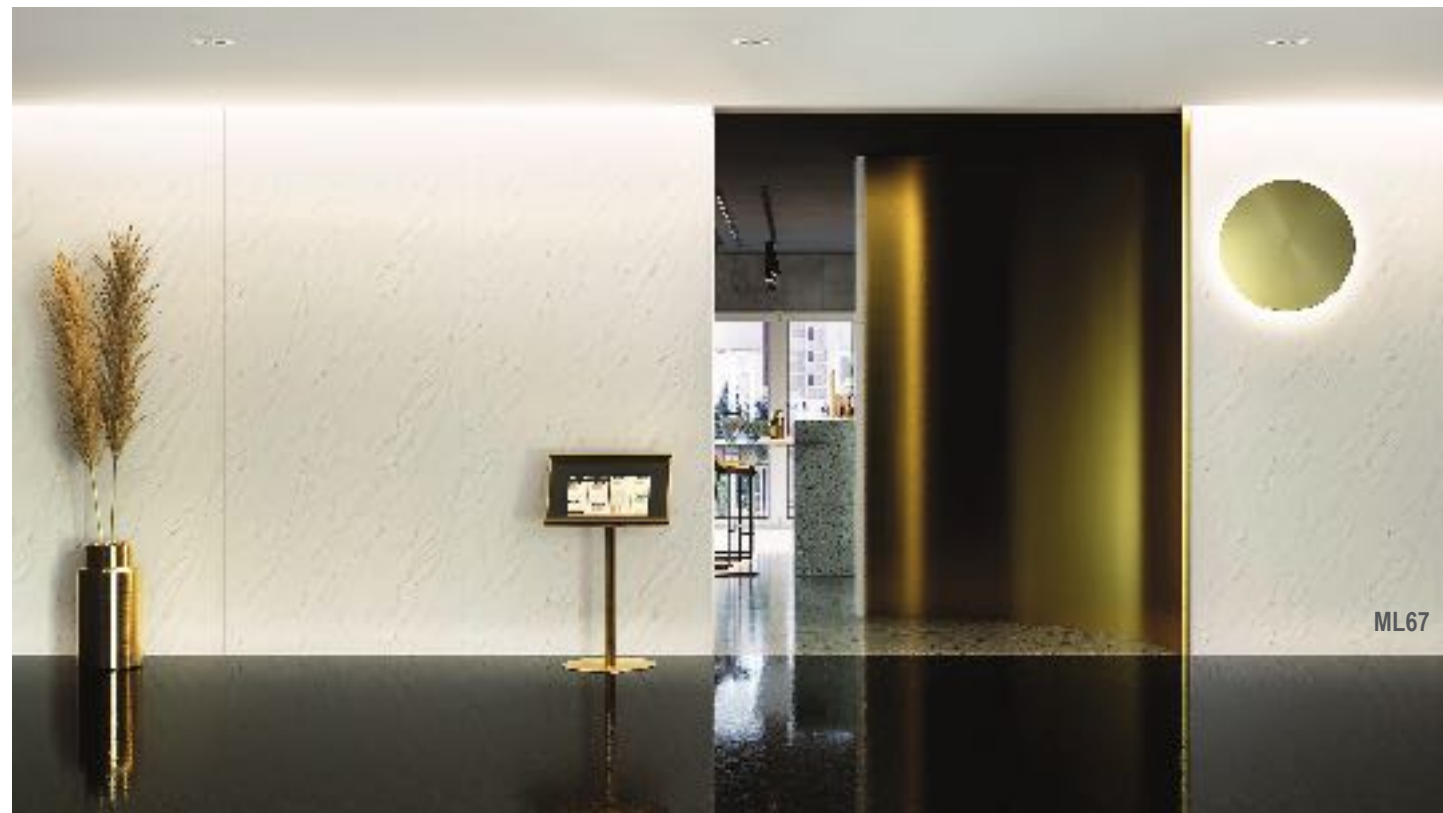
NS002  23P * CONCRETE (WARM GRAY)



ML69 22P BIANCO CARRARA (DEEP SPACE)



NS003  23P * CONCRETE (DARK GRAY)



ML67



ML56 22P TRAVERTINE (WHITE)



ML42 22P PLASTERED WALL (GRAY BEIGE)



ML23 22P STONE



ML57 22P TRAVERTINE (WARM GRAY)



RM13 22P MARBLE



ML65 LIME STONE (WARM GRAY)



ML25 22P STONE



ML66 LIME STONE (DEEP PURPLE)



ML24 22P STONE



EL215  NATURAL STONE (DARK GRAY)



ML58 22P TRAVERTINE (DARK GRAY)

MARBLE / STONE



ML59 REAL CONCRETE (LIGHT GRAY)



ML60 REAL CONCRETE (WARM GRAY)



ML61 REAL CONCRETE (DARK GRAY)



ML178 Q 23P ! SOLID CONCRETE (BEIGE)



ML177 BEST Q 23P ! SOLID CONCRETE (GRAY)



ML176 Q 23P ! SOLID CONCRETE (DARK GRAY)



ML63 Q 22P PLASTERED WALL BRUSH (COUGAR BROWN)



ML62 Q 22P PLASTERED WALL BRUSH (LIGHT GRAY)



ML64 Q 22P PLASTERED WALL BRUSH (COOL GRAY)

LEATHER



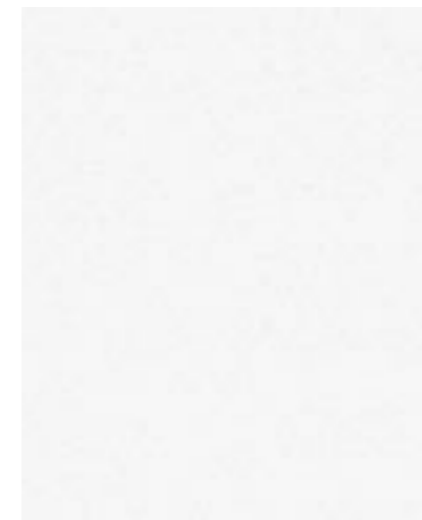
EL239 N Q 23P ! CALF (PATTERN)



EL139 ! CALF (BEIGE)



EL140 ! CALF (CAMEL)



ML31 WARM BEIGE



ML13 MIDDLE BROWN



ML14 DARK BROWN

LEATHER

고급스러운 레더의 포근하고 부드러운 느낌과
트렌디한 컬러를 더하면 개성 만점 포인트 가구와
어울리는 새로운 공간을 연출합니다.

Combination of warm and soft feeling of luxury
leather and trendy colors creates a new space that
matches well with unique and distinctive furniture.

LE005

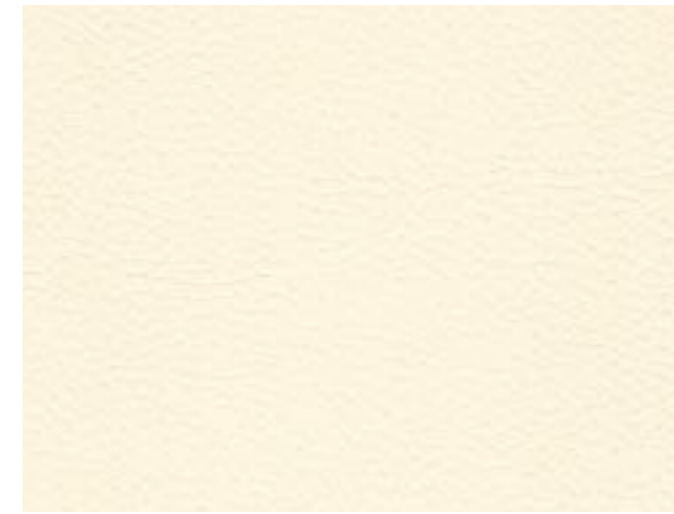


N
신패턴
New

()
비방염 원더번호
Non-Flame retardant

패턴북
Pattern Book

!
시공유의
Installation Instructions



LE001 **N** !

IVORY



LE002 **N** !

LIGHT GRAY



LE003 **N** !

WARM BEIGE



LE004 **N** !

SEA BLUE



LE005 **N** !

TAN BROWN



LE006 **N** !

WINE

WOVEN

자연스럽게 직조한 고급스러운 우븐 제품은
깊이 있는 엠보싱으로 따뜻하고 아늑한 공간을 연출합니다.

A classy natural woven product creates warm
and cozy space with deep embossing.



WV001

NW105

N
신패턴
New

()
비방염 원터번호
Non-Flame retardant

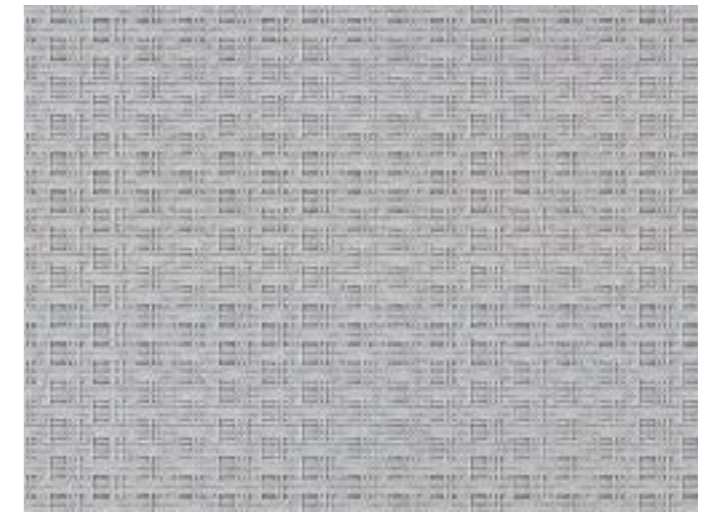
+
패턴북
Pattern Book

!
시공유의
Installation Instructions



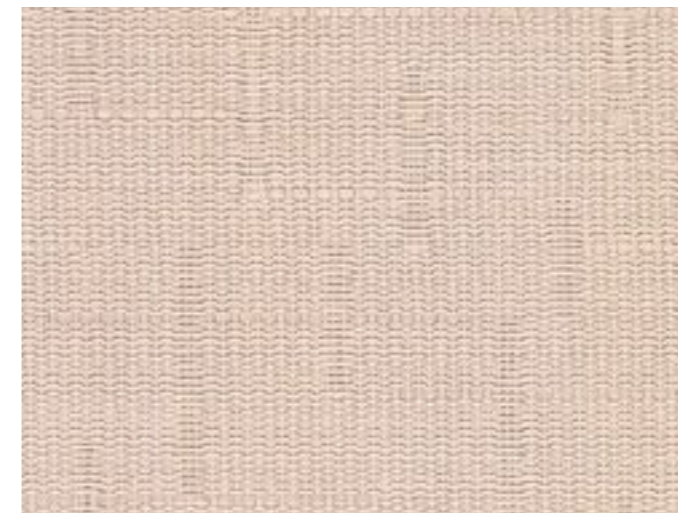
WV001 **N** **!**

IVORY



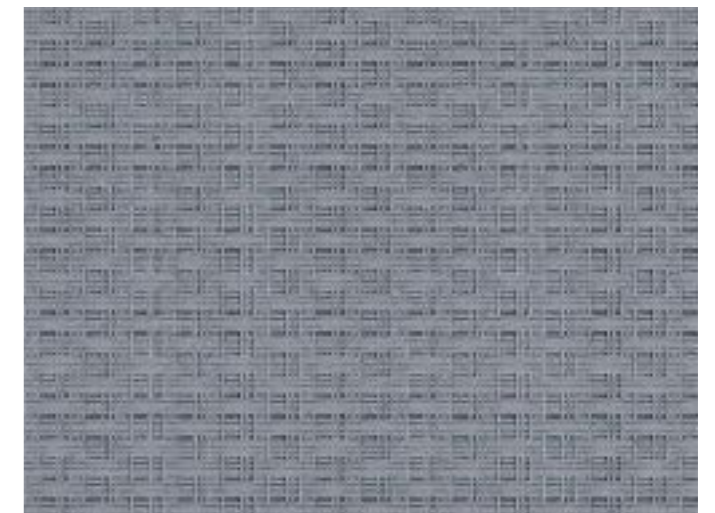
WV004 **N** **!**

COOL GRAY



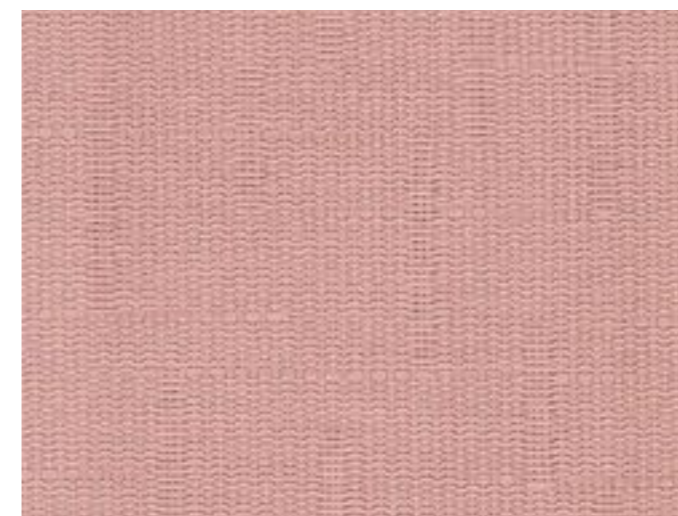
WV002 **N** **!**

LIGHT PINK



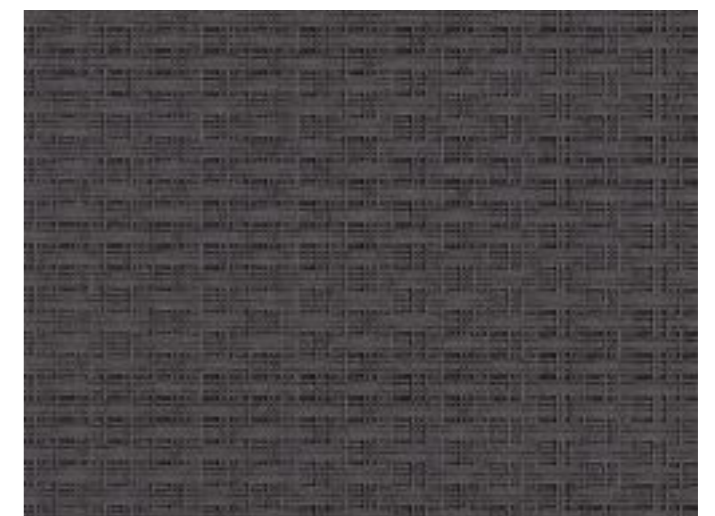
WV005 **N** **!**

BLUE GRAY



WV003 **N** **!**

WARM PINK



WV006 **N** **!**

DARK GRAY

FABRIC

신패턴
New

()
비방염 권덕번호
Non-Flame retardant

패턴북
Pattern Book

!
시공유의
Installation Instructions



ML45 LINEN (HAZELNUT)



ML44 LINEN (ICE COOL)



ML46 LINEN (MINT)



ML47 LINEN (GRAY)



ML48 LINEN (DEEP GRAY)



ML51



ML49 TWEED (LIGHT GRAY)



EL235 CLASSIC (GRAY WOLF)



ML51 TWEED (BLUE JEAN)



EL052 CLASSIC (NATURAL BEIGE)



EL043 STRING WAVE (LIGHT BEIGE)



EL049 STRING WAVE (METAL)

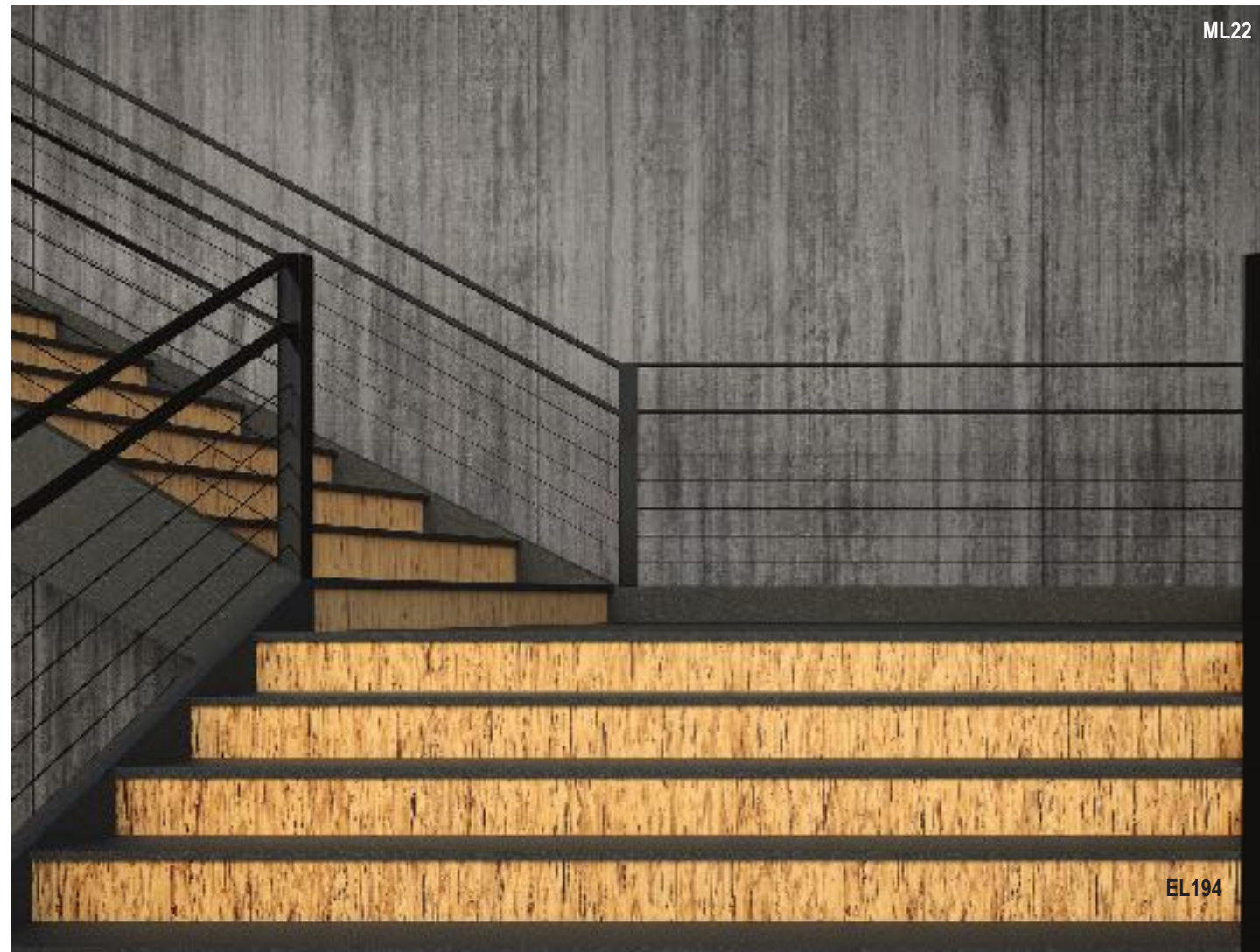


EL051 CLASSIC (PINK BEIGE)



EL044 STRING WAVE (DARK GRAY)

FANCY



EV083 ! TEXTURED METAL (PALE GOLD)



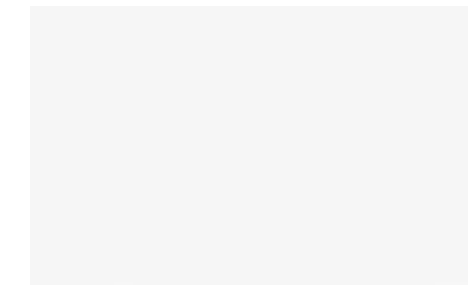
ML20 22P RUSTIC BRONZE



ML22 22P RUSTIC BRONZE

OUTDOOR

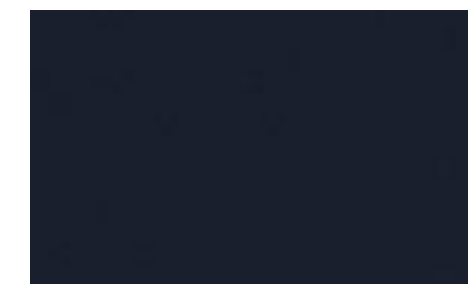
OUTDOOR series is for surface finishing materials to decorate building exterior including windows, panels, doors and others. It acquires the RAL quality certification of Germany for the first time as an Asian country, which products are suitable for severe outdoor conditions of UV rays, humidity and others.



US001 ! SAND (WHITE)



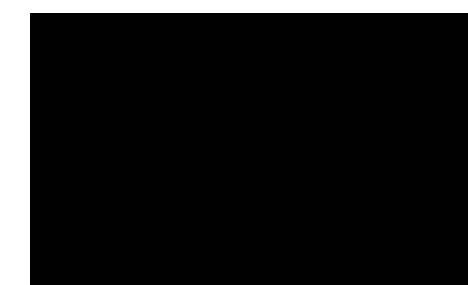
US005 ! SAND (CHARCOAL)



US003 ! SAND (DEEP BLUE)



US004 ! SAND (DEEP BROWN)



US002 ! SAND (BLACK)



OUTDOOR



UP001 ! TRAVERTINE (BEIGE)



UP002 ! WOOD (MERSEY OAK)



UP003 ! RUSTIC METAL (DEEP BROWN)



UM002 ! SAND (OLIVE GRAY)



UM001 ! SAND (DARK GRAY)



UP001 / UP002 / UM005

Certification & Test Report



ASTM E-84 Test



CE KA5007



CE KA5008



China fire retardant certification



China fire retardant certification



Germany B1 test report

Certification & Test Report



Lloyd marine certification(Fire Approval)



Lloyd marine certification(Module B)



Lloyd marine certification(Module D)



Phthalatesoconstriction content report



Antibacterial test report

! Things to be aware of during Interior Film application

1. Before applying

- It is required to examine the areas in advance where problems may occur during installation by checking the type and condition of the adhered materials (MDF, etc.) on which the film is applied.
 - In case of MDF, the adhesive strength and flame-proof performance differ based on density, so it is required to use MDF with uniform density.
 - The painted surface should be cleaned with alcohol to remove contaminants, and checked for damage by solvent. Uneven areas should be polished with sand paper after the putty treatment and residues should be removed with a brush.
 - In case of metal plates, the contaminants on the surface should be removed by using alcohol or lacquer thinner. Then uneven areas from welding should be polished with sand paper after the putty treatment and residues should be removed with a brush.
- It is necessary to carry out preliminary inspection work on the abnormal condition (pattern name, appearance condition, etc.) of the product selected by the customer.
- Installation should be carried out after the wooden construction and before painting and wallpaper work.

2. Prior task for Surface

- The section (cut area) of the adhered material (MDF, etc.) where the film will be applied must be polished sufficiently with sand paper.
 - In particular, in case of wood materials (MDF, PB, etc.), as the smoothness of the bent and joint part is important, if the surface condition is found to be rough from the preliminary inspection, it must be polished by sandpaper or do putty treatment before installation.

3. Primer Treatment

- For the primer treatment, the cut surface of wood materials (MDF, PB, etc.) among adhered materials has a high primer absorption rate, so that the primer should be applied 2 or 3 times. Multiple applications should be carried out in sequence, after the previously applied primer has completely dried.

4. How to apply

- Please make sure that the cut surface of the film is not visible as much as possible for installation.
- Film installation should be done in a way that the adhered material is not visible as much as possible.
- Since it is likely there would be a color difference between product lots, it is necessary to classify product lots for installation.
- The site temperature should be maintained at 15 - 25°C from 72 hours before installation to 48 hours after installation. If the product is left outside in the winter time, it may cause deterioration of adhesion due to temperature drop.

5. Things to be aware of when applying specific products

SW, EL, LE, PL, WV	<ul style="list-style-type: none"> - These products have no film layers on the surface but surface treatment only, so please be careful rubbing and bending corners with wool felt or cotton gloves not to damage the printed layer. - Due to the surface treatment layer, the product may slip for overlapping installation. Therefore, it is required to apply the solution of water primer PM-04 and dry it sufficiently before installation.
US, UM, UP	<ul style="list-style-type: none"> - Outdoor products should be installed by observing a separate specification standard.
HIGH GLOSS	<ul style="list-style-type: none"> - In order to properly produce the luster effect of the film surface, the installation should be done in a clean environment. - If the installation is being made while foreign matters (dust, dirt, etc.) remain on the adhered materials (MDF, etc.) and the adhesive surface of the film, it may cause scratch or embossing on the film surface. - Due to the high hardness of the product, it is necessary to do finishing work perfectly by applying more force in order to prevent the edges from lifting and produce clean visual effect.
NATURE CRAFT	<ul style="list-style-type: none"> - It is required to do butt joint installation. There is a risk of peeling of the overlapped area due to embossing and surface treatment layer for the overlapping installation. - The product is made of special multi-layer structure, so if the surface is heated during installation, it may cause layer separation or surface wrinkles and cannot be applied to curved surface. - It is necessary to cut and install considering connection between patterns. It is not able to connect patterns properly if you cut the product according to the print scale on the release paper. - There is no film layer on the surface, so please be careful when rubbing the corners with wool felt cotton gloves, etc. not to damage the printed layer.

6. Others to note

- Film installation must observe the installation guidelines of the specifications.
- In regard to installation method and adhered materials (MDF, etc.), please contact LG Hausys or retail dealers to check the workability of installation in case of applying the product to the different adhered materials to the specifications.
 - In case of application on acrylic materials, it may cause air bubbles so please contact and confirm with LG Hausys or retail dealers first before installation.
- For film installation, it is required to use LG Hausys water primer PM-04.